

## Horizon 2020 - Smart Cities and Communities

### **ISFOOD Proposal**

*Anna M. Baron Isanta*

IC\_Cartotechnology

Organized by



Certified by



Supported by

Direcció General d'Universitats

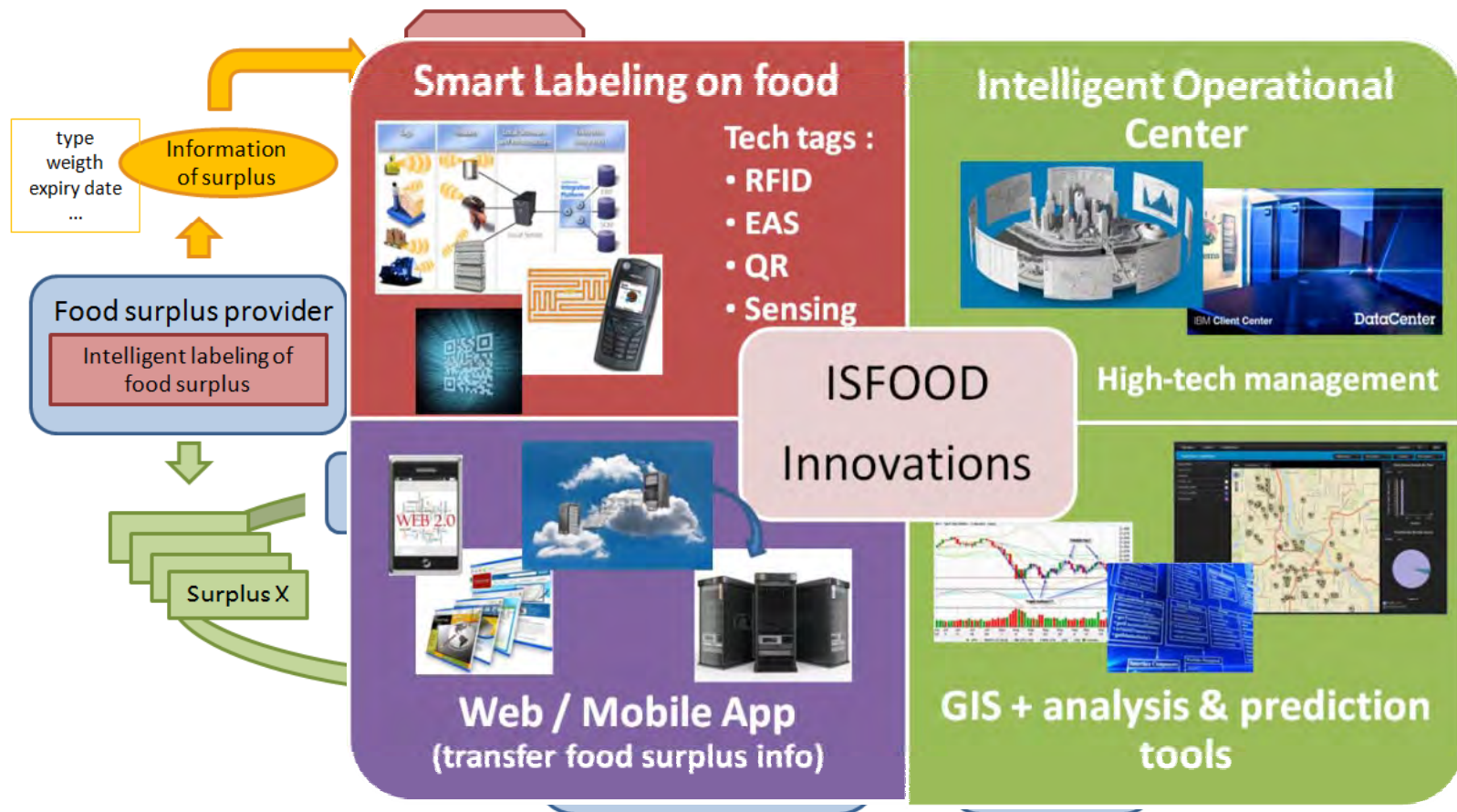


# ISFOOD: Overview

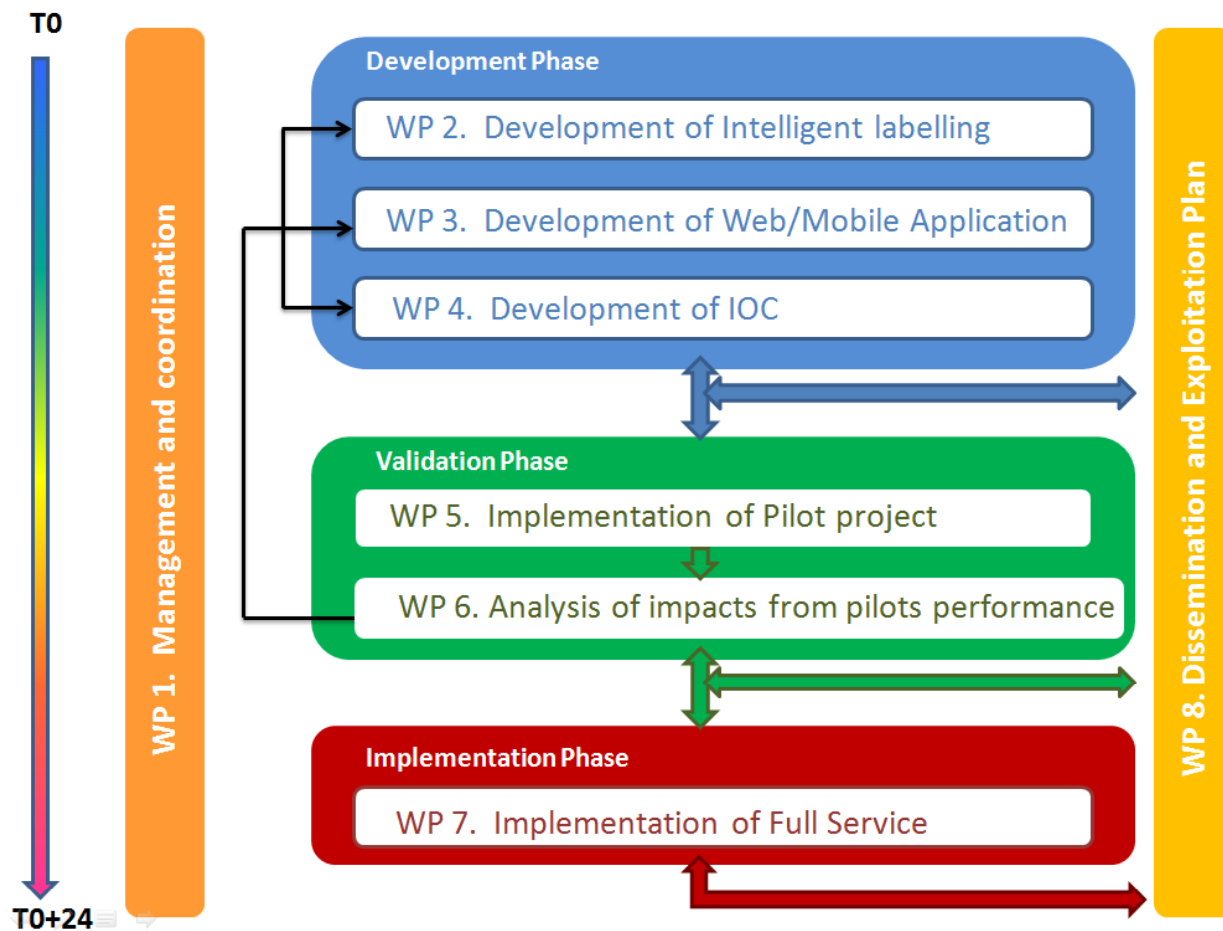


	SCC1: Solutions integrating energy projects
<b>Title</b>	<b><u>I</u>ntelligent <u>S</u>ervice for <u>F</u>ood <u>O</u>ptimally and <u>O</u>bjectively <u>D</u>istributed</b>
<b>Description</b>	<p>Service created to confront two problems:</p> <ul style="list-style-type: none"> <li>• Food waste (large environmental, economical and social impact)</li> <li>• Food access difficulties by families below poverty line threshold.</li> </ul> <p>What's new:</p> <ul style="list-style-type: none"> <li>• Use of new technologies, innovations and technical capacities.</li> <li>• Centralized food surplus exploitation and food aid service.</li> <li>• Strategy to induce changes in tax policies that encourage the donation of food.</li> </ul>
<b>Objectives</b>	<ul style="list-style-type: none"> <li>• Food waste reduction by 85% compared to the current one.</li> <li>• Guarantee supply complete food diet to 80% of needy families.</li> <li>• Powerful service at a local level (inclusive and exportable).</li> </ul>

# ISFOOD: Architecture



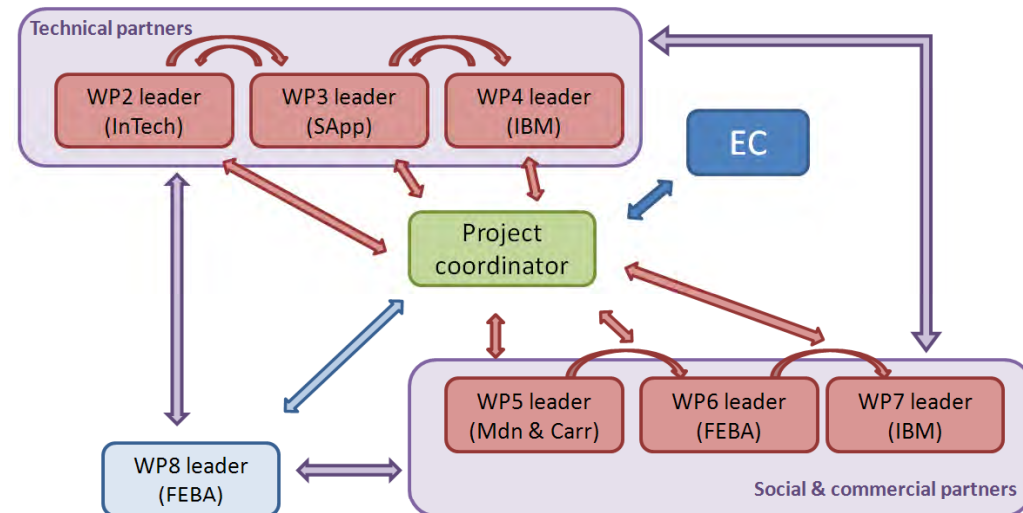
# ISFOOD: Workplan



# ISFOOD: Consortium



Participation No.	Participant Organization Name	Country
1 (coord)	IBM Client Center Barcelona	Catalunya
2	Insignia Technologies Ltd.	UK
3	SmartApp Co.	Holland
4	European Federation of Food Banks	France
5	Mercadona	Spain
6	Carrefour Italy SA – Carrefour Palermo SA	Italy – Portugal





# ISFOOD: Impacts



	SCC1: Solutions integrating energy projects
Impacts	<ul style="list-style-type: none"> <li>• Environmental level:               <ul style="list-style-type: none"> <li>• Reduction of GHGs estimated on a 2%</li> <li>• Save more than 500.000 m<sup>3</sup> of water</li> <li>• Preservation of land resources of the equivalent of 900 hectares of land.</li> </ul> </li> <li>• Economic level:               <ul style="list-style-type: none"> <li>• Save of 150M € according the cost of production and the market price.</li> <li>• Exportable service</li> </ul> </li> <li>• Social level: min. 3250 families complete food diet.</li> </ul>
Financial Cost	<p>Direct costs: 1.9M€ (154 person/months + infrastructure + travels + ...)</p> <p>Indirect costs: 0.1M€</p>